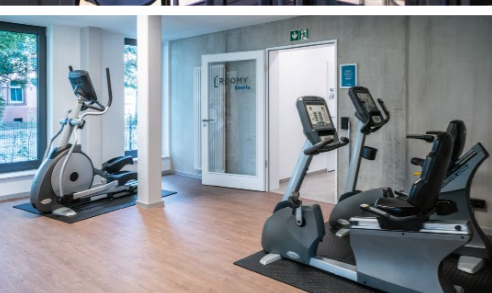
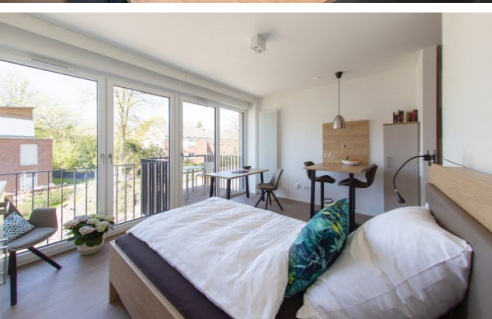




**ROOMY -
RESIDING AND
LIVING IN THE
BEST HANDS.**



Living comfort

- Optimal **use of space**
- **High quality complete furnishing (apartments) or complete or partial furnishing (flats)** in a contemporary design and colours
- Bright rooms with warm white **LED lighting**
- **Balcony/terrace**, well equipped **kitchen**, dining table, sleeping area with 120 cm bed (type single), 160 cm bed (type double) or 160/180 cm bed (flats), desk, cupboards, dressers and **modern bathroom**
- **ROOMY Lounge** with terrace, **vending machines for drinks and snacks** and a **separable learning room**
- Sunny **roof terraces**
- **Gym ROOMY Sports**
- **Launderette** with dryers
- **Bicycle parking**, partly covered
- **Security concept** with intercom, door opener, video cameras, exterior lighting and transponder locking system
- Central **lift system** and all apartments **barrier-free**, **some of them wheelchair accessible** according to DIN 18040-2
- **Services** as required



All-inclusive

- **All-inclusive rent** from 6 months rental period
- **Fully furnished** comfort apartments, partly or fully furnished flats
- **All-inclusive rent**, no additional costs
- **WLAN** in common areas
- **Television reception** via SAT system
- Use of the **ROOMY Lounge** and **ROOMY Sports**
- **Cleaning** of the common areas
- **Service and support team** on site
- Community **events**



Extra services

- **Apartment and window cleaning** on request
- **Carpport** or **outdoor parking space** for the car (also handicapped accessible) for rent
- Covered **bicycle parking spaces** for rent
- **Charging stations for e-bikes and cars**
- Modern **flat screen TV** for rent
- Use of **washing machines** and **dryers** at a small charge



Location

- **Bus stop** 150 m
- Various **drugstores and supermarkets** 750 m
- **Pharmacy and doctors** 750 m
- **Eating, drinking and going out** 550 m
- **Harbour district** Münster approx. 2.5 km
- **Central station** approx. 3.5 km
- Münster **city centre** with **Salzstraße** 3.5 km, **Ludgerstraße** 3.9 km and **Prinzpalmarkt** 3.8 km
- **Cinemas** 3 km
- **Indoor swimming pool** 1.5 km and **outdoor swimming pool** 1.9 km
- **Churches, catholic** 500 m and **protestant** 800 m
- **Motorway ring road** 850 m
- Various banks, DHL packing station and post office 500 m
- **Petrol station** open 24 hours 950 m
- **St. Franziskus-Hospital** 2.3 km
- **University hospital** 6.2 km
- **University** approx. 4.5 km

You would like to learn more about our apartments and the concept of ROOMY? Please contact us by e-mail or phone.

ECO.PLAN GmbH & Co. KG

Weßlings Kamp 19
48653 Coesfeld

Phone +49 (0) 25 41 / 926 29 - 50

E-Mail roomy-muenster@eco-plan.de

Office hours

Mon - Thu 8:00 am - 5:00 pm

Fri 8:00 am - 1:00 pm

All information and floor plans:
www.roomy-muenster.com

ECO.PLAN
INDUSTRIE- UND WOHNUNGSBAU

VR
Südwestment

ROOMY
münster

easy living
for smart people



■ All-inclusive apartments and flats
fully or partially furnished
for students and professionals

LOCATION

The green east of Münster

Münster's east is a charming neighbourhood with shops for basic supplies and attractive trendy districts. The harbour and Wolbecker Straße with bars and restaurants are nearby. In the eastern part of the city mainly students, professionals and young families live, who appreciate the short distances to the city centre, the offices and the universities. The area is ideal for jogging and cycling or other outdoor activities in the surrounding nature. A cycle path leads directly to the harbour.



2.5 km
to harbour district

3.8 km
to the city

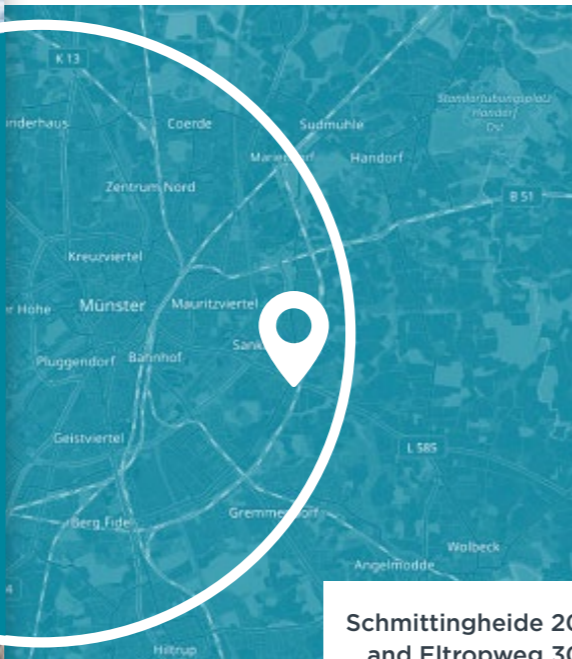
4.5 km
to the university



LIFE

Community ...

New in the city and haven't made a connection with someone yet? Everyone who wants to, will find community here at ROOMY. There is the lounge with counter area and fully equipped kitchen, comfortable sofas and armchairs, TV and terrace for cooking, chatting and relaxing. If you like, you can also get to know your neighbours in our fully equipped in-house gym ROOMY Sports.



Schmittingheide 20
and Eltropweg 30
48155 Münster

... and residence

ROOMY feels like a comfortable hotel stay. All 114 comfort apartments and 14 flats have a bathroom and a balcony. The interior design is stylish, high quality and very modern. Learning, cooking, relaxing, sleeping - everything is possible. Our attentive facility management ensures the well-being of every resident. The service team keeps the house and garden in order.

TYPE SINGLE

All-inclusive rent
Approx. 29 - 33 sqm
From € 590



TYPE DOUBLE

Also possible as wheelchair accessible
All-inclusive rent
Approx. 43 - 48 sqm
From € 850



3-ROOM FLAT

Also suitable for flatsharing
All-inclusive rent
Approx. 75 - 87 sqm
From € 1450



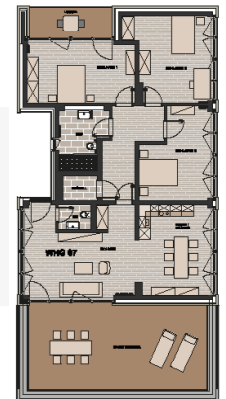
2-ROOM FLAT

All-inclusive rent
Approx. 38 - 59 sqm
From € 775



4-ROOM FLAT

All-inclusive rent
Approx. 140 sqm
€ 2300



BENEFITS AT A GLANCE



All-inclusive rent



Service



ROOMY Lounge



Comfortable equipment



ROOMY Sports



Facility management



Good location with
transport links



Bicycle garage,
partly covered



Barrier-free
DIN 18040-2